



Colegios
"El Valle"

Actividades de verano 2019

Nombre y apellidos: _____

Curso: _____ Grupo: _____

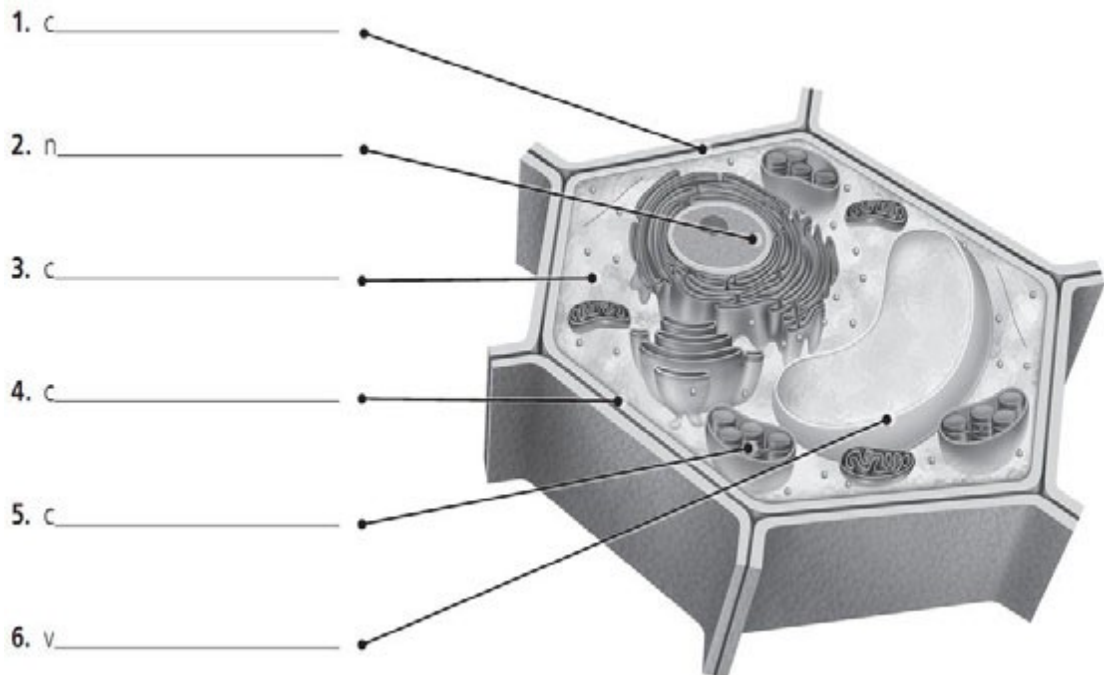
5º Ed. Primaria
Natural Science

UNIT 1

1. Choose the correct words to complete the sentences.

- a. Taking in food to obtain energy is called *nutrition* / *growth*.
- b. *Respiration* / *reproduction* means producing new lives.
- c. Responding to changes in the environment is called *movement* / *reaction*.
- d. Exchanging gases with the environment is called *respiration* / *excretion*.
- e. *Interaction* / *excretion* means getting rid of waste.

2. Label the plant cell.



3. Match the kingdom with the organism.

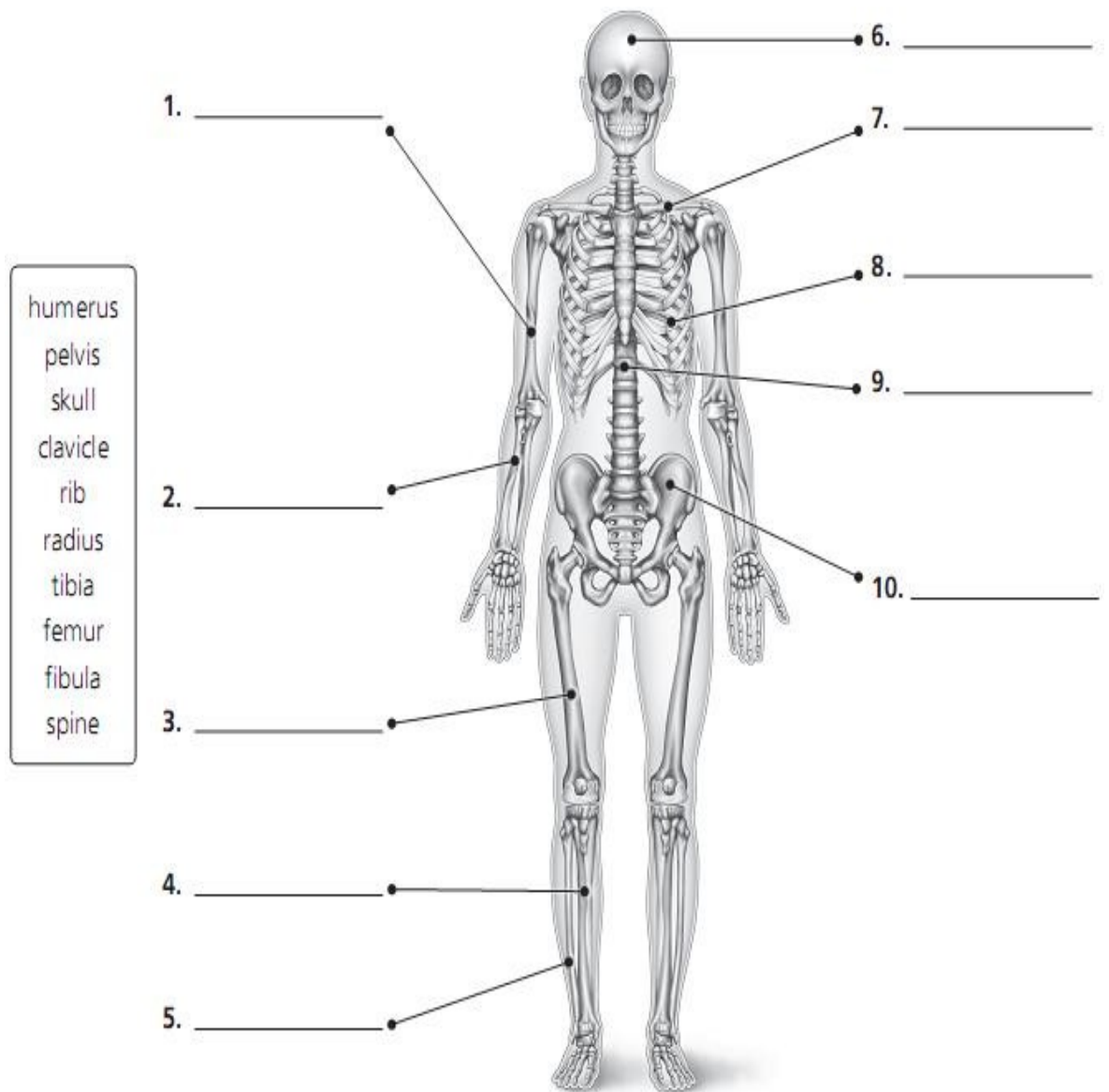
a. Plant Kingdom	1. yeast
b. Animal Kingdom	2. tree
c. Protist Kingdom	3. bacteria
d. Fungus Kingdom	4. algae
e. Monera Kingdom	5. starfish

UNIT 2

4. Which systems are these body parts in?

- a. lungs _____
- b. stomach _____
- c. veins _____
- d. small intestine _____
- e. muscles _____
- f. brain _____

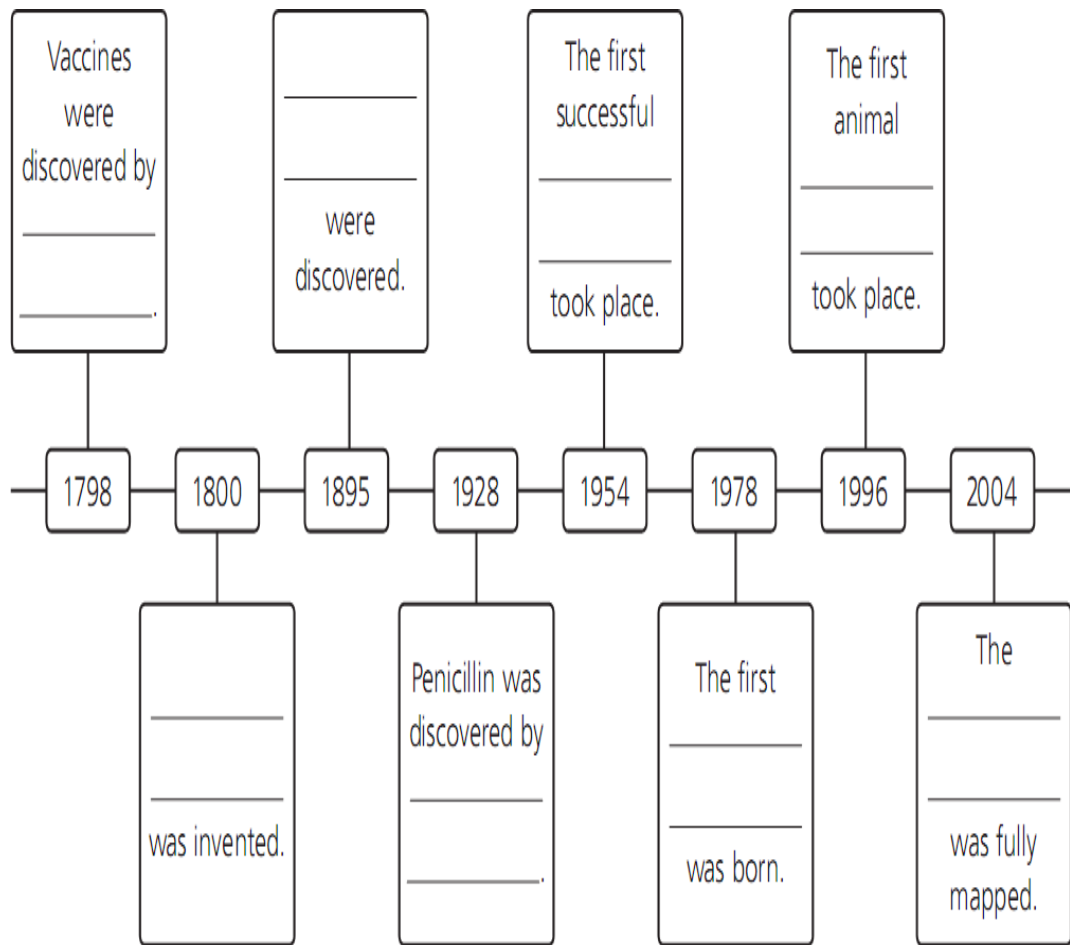
5. Label the bones.



UNIT 3

6. Look at the timeline and complete the sentences with the words from the box.

organ transplant	test-tube baby	X-rays	Alexander Fleming
cloning	anaesthesia	Edward Jenner	human genome



7. Write two healthy and two unhealthy habits.

- a. _____
- b. _____
- c. _____
- d. _____

UNIT 4

8. Complete the sentences.

- a. Plants are classified into flowering and _____ plants.
- b. Flowering plants reproduce through _____.
- c. Angiosperms produce seeds in their _____.
- d. Gymnosperms produce seeds in their _____.
- e. Non-flowering plants are classified into _____ and _____.

9. Put the process of photosynthesis in order. There is one sentence you don't need.

- a. Leaves absorb carbon dioxide and turn it into glucose and oxygen. ☐
- b. Xylem cells transport the mixture to the leaves. ☐
- c. The leaves change colour in autumn. ☐
- d. Phloem cells carry the glucose to the rest of the plant. ☐
- e. The plant's roots absorb water and minerals from the soil. ☐

10. Match the words to the definitions. There is one extra definition.

a. raw sap

b. chlorophyll

c. plant respiration

d. glucose

1. a form of sugar

2. a liquid that contains minerals and water

3. a type of tissue that transports the glucose to all the parts of the plant

4. a green substance that gives plants their colour

5. the exchange of CO_2 for O_2

UNIT 5

11. Look at the picture. Identify and write.

a. Three living components: _____

b. Three non-living components: _____

c. Two examples of flora: _____

d. Two examples of fauna: _____



12. Choose the correct words to complete the sentences.

- a. A *savannah* / *the tundra* is the coldest ecosystem on Earth.
- b. The *tundra* / *grasslands* *don't* / *doesn't* have trees.
- c. Coniferous forests are located in *warm* / *cold* areas of the world.
- d. Oak, beech and maple trees are found in *Mediterranean* / *temperate deciduous* forests.
- e. Deserts are very *hot* / *cold* at night.
- f. *Temperate grasslands* / *deserts* / *rainforests* are the driest places on Earth.

UNIT 6

13. Complete the table with the words from the box.

commensalism	competition	family group	gregarious species		
hierarchical community	host	mutualism	parasite	predator	prey

organism	relationship
lion → zebra	_____
zebra → lion	_____
queen ant → worker ant	_____
cat → kitten	_____
male deer → male deer	_____
cattle → egret	_____
mosquito → human	_____
human → mosquito	_____
bee → flower	_____
clownfish → clownfish	_____

14. Use the words from the box to complete the text.

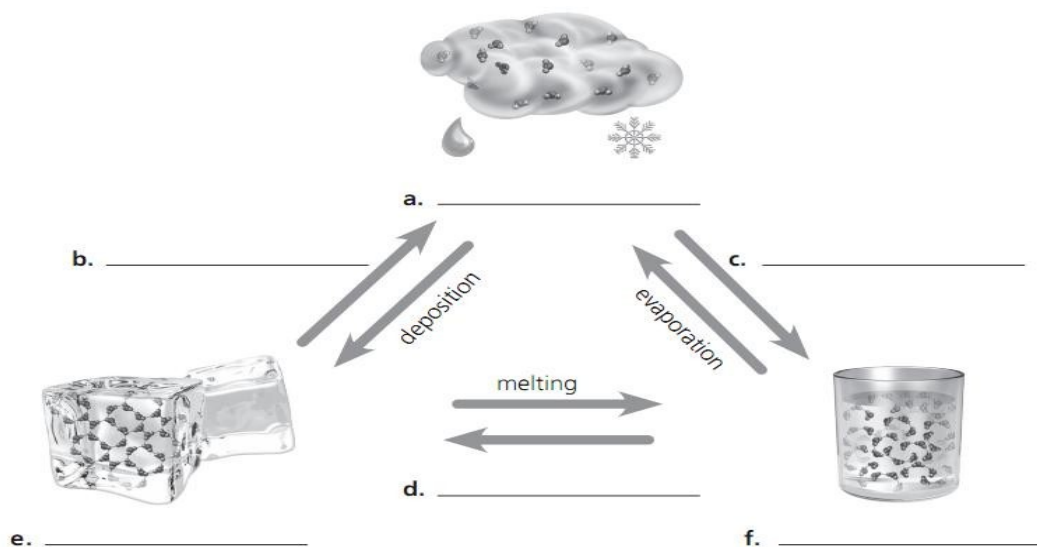
predator	death	rabbits	bacteria
algae	predator	energy	

A food chain shows the movement of (1) _____ through an ecosystem. The Sun is the source of all energy on Earth and plants and (2) _____ use it to produce their own food through photosynthesis. Plants are eaten by animals such as (3) _____. The next level in the food chain is (4) _____. In fact, the same animal can be both (5) _____ and prey because they are hunted by other animals. The final level is decomposers, such as fungi and (6) _____. They eat other organisms after their (7) _____.

UNIT 7

15. Label the diagram with the words from the box.

condensation	sublimation	gases	liquids	solidification	solids
--------------	-------------	-------	---------	----------------	--------



16. Tick the boxes that apply to the states of matter.

property	liquid	solid	gas
definite shape		✓	
indefinite shape			
definite volume			
indefinite volume			
can be compressed			

17. Match the properties to their definitions.

a. density	1. the scratch resistance of an object
b. solubility	2. the amount of matter an object has
c. mass	3. the amount of matter in a volume
d. thermal conductivity	4. how much space an object occupies
e. hardness	5. how much heat an object can conduct
f. volume	6. how easily a substance dissolves in another substance

18. Complete the text.

When we mix two or more pure substances, we get two different results: homogenous or heterogenous mixtures. In a homogenous mixture, such as (1) _____ or (2) _____ water, it is not possible to see the individual substances.

But in a heterogenous mixture, such as

(3) _____ or

(4) _____ they can be seen.

If we want to separate the substances, there

are three methods: (5) _____,

(6) _____ and sieving.